



Glass Bead Pour

Products and Supplies:

GOLDEN Gesso
GOLDEN Glass Bead Gel
GOLDEN Fluid Pyrrole Red Light
GOLDEN Fluid Green Gold
GOLDEN Fluid Iridescent Pearl
GOLDEN High Flow Phthalo Blue (GS)
GOLDEN High Flow Naphthol Red Light
Brush, Palette Knife

- 1: Brush apply Gesso and allow to dry.
- 2: Brush apply Fluid Pyrrole Red Light and dry.
- 3: Apply a single Glass Bead layer with a palette knife and dry.
- 4: Pour alternating lines of High Flow colors, thick and thin across board and then lines of the Fluid colors over the High Flow. The High Flow will bleed out from the Fluid colors and seep into adjacent stripes.

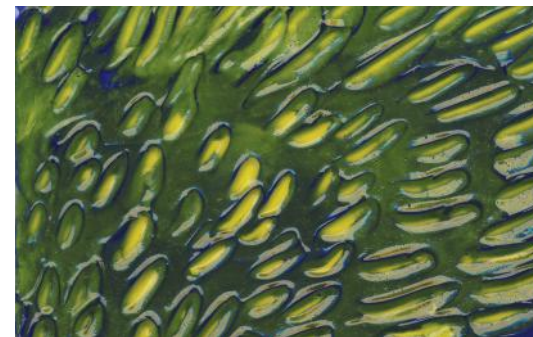


Patina Crackle Stamp

Products and Supplies:

GOLDEN Black Gesso
GOLDEN Crackle Paste
GOLDEN Fluid Iridescent Bronze
GOLDEN Fluid Iridescent Silver
GOLDEN Fluid Raw Umber
GOLDEN Acrylic Glazing Liquid (Gloss)
GOLDEN Polymer Medium (Gloss)
Brush, Palette Knife, Stamp, Rag, Paper Plate

- 1: Brush apply Gesso. While wet, dip crumpled rag into the Iridescent colors and create a speckled effect. Dry.
- 2: With a palette knife, apply a layer of Crackle Paste. Leave some of the background blank. Vary thickness.
- 3: Dip a wet stamp into the Iridescent Bronze and then directly into the Crackle Paste. Remove. Water will allow color to patina.
- 4: Create a 10:1 glaze of Acrylic Glazing Liquid and Raw Umber. Glaze over outside edges of Crackle Paste. When dry, seal with Polymer Medium (Gloss).

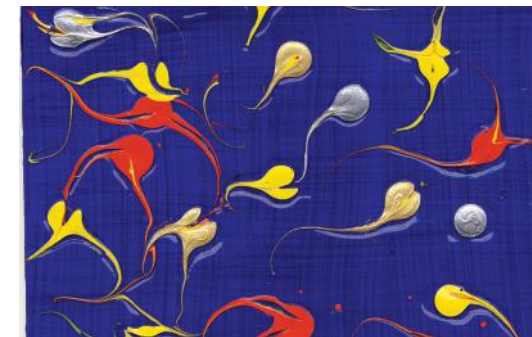


Heavy Gel Sgraffito

Products and Supplies:

GOLDEN Gesso
GOLDEN Heavy Gel (Gloss)
GOLDEN Self-Leveling Gel
GOLDEN Fluid Ultramarine Blue
GOLDEN Fluid Hansa Yellow Medium
Brush, Palette Knife, Pointed Tool

- 1: Brush apply Gesso and allow to dry.
- 2: Create a 3:1 mixture of Heavy Gel (Gloss) and Ultramarine Blue. Spread onto surface with palette knife. Using pointed tool, drag into the gel creating strokes over the entire board. Allow to dry.
- 3: Create a 3:1 mixture of Self-Leveling Gel and Hansa Yellow Medium. Spread onto surface with a palette knife. Allow to dry.



Marbled Tar Gel

Products and Supplies:

GOLDEN Gesso
GOLDEN Fluid Ultramarine Blue
GOLDEN Clear Tar Gel
Assorted GOLDEN Fluids
Brush, Palette Knife, Pointed Tool

- 1: Brush apply Gesso and allow to dry.
- 2: Brush apply Ultramarine Blue and allow to dry.
- 3: Pour Clear Tar Gel onto the board. Carefully spread with palette knife. To prevent bubbles, avoid moving product around too much.
- 4: While wet, apply single droplets of Fluids onto the surface.
- 5: Using a pointed tool, drag through the colors and spread in feathery lines. Keep the pattern simple as the gel will continue to spread. Dry in a dust free area.



OPEN Imprint

Products and Supplies:

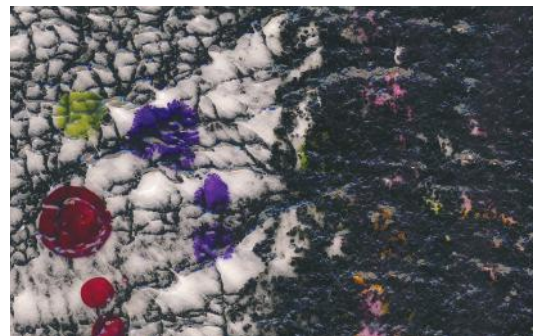
GOLDEN Black Gesso
OPEN Raw Umber
OPEN Titan Buff
Brush, Palette Knife, Plastic Wrap

- 1: Brush apply Gesso and allow to dry.
- 2: Apply a thin layer of OPEN colors onto the board.
Blend colors side to side.
- 3: Lay a wrinkled sheet of plastic wrap loosely over wet surface. Press down into paint with fingers and remove. Allow to dry.

help@goldenpaints.com
607-847-6154
goldenpaints.com

Videos and more:
MixMoreMedia.com

M013303 ©2016 Golden Artist Colors, Inc.

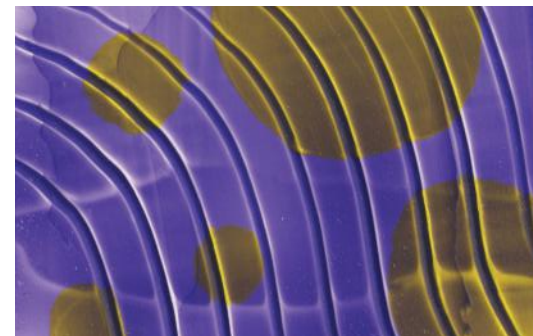


Molding Paste Imprint

Products and Supplies:

GOLDEN Black Gesso
GOLDEN Light Molding Paste
GOLDEN Self-Leveling Gel
GOLDEN Black Mica Flake (Small)
Assorted GOLDEN High Flow Colors
Brush, Cheese Cloth, Palette Knife

- 1: Brush apply Gesso and allow to dry.
- 2: With a palette knife, thinly apply Light Molding Paste through the cheese cloth onto the board. Remove cheese cloth and allow to dry.
- 3: With a palette knife, apply a layer of Self-Leveling Gel onto board. While wet, apply drops of High Flow Colors onto the gel. Colors will spread. Allow to dry.
- 4: With a palette knife, skip a layer of Black Mica Flake over a portion of the board, allowing some of the color to come through. Allow to dry.



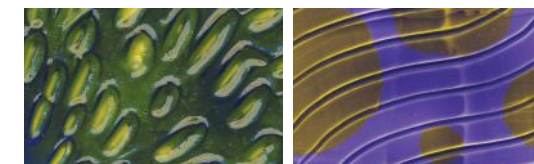
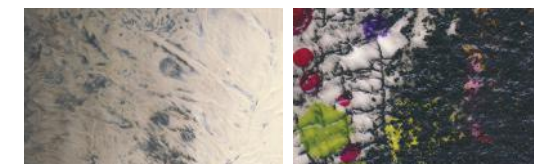
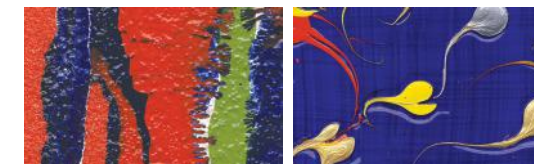
Encaustic-Like Surface

Products and Supplies:

GOLDEN Gesso
GOLDEN Hard Molding Paste
GOLDEN Heavy Gel (Matte)
GOLDEN Fluid Ultramarine Violet
GOLDEN Fluid Hansa Yellow Medium
Brush, Palette Knife

- 1: Brush apply Gesso and allow to dry.
- 2: With a palette knife, apply Hard Molding Paste to the board. Create linear marks with end of palette knife and allow to dry.
- 3: With a brush, paint yellow circles and allow to dry.
- 4: Create a 10:1 mixture of Heavy Gel (Matte) and Ultramarine Violet. Mixture will darken as it dries; do not over color. Apply to surface. Allow to dry.

Layered Surfaces How To.



GOLDEN
ARTIST COLORS®

MixMoreMedia.com